

Michal Rataj

BEAMS

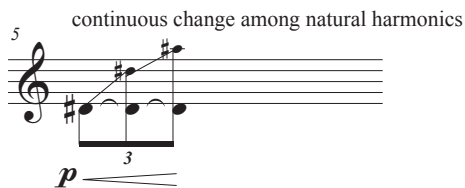
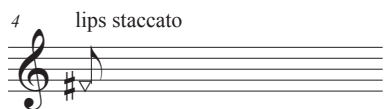
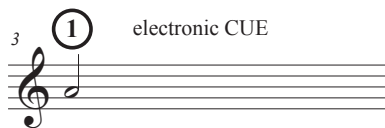
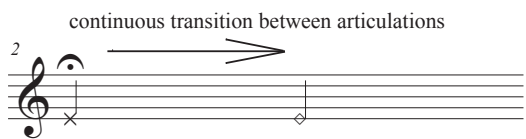
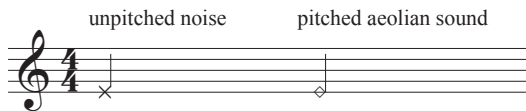
for flute and electronics

Dedicated to Monika Štreitová

BEAMS

for flute and electronics

Notes on performance



Electronic part (MAX patch) available at mr@michalrataj.com
or as download at the website www.michalrataj.com under "Electro-acoustic compositions"

MAX cues are triggered either via standard sustain pedal operating MIDI output, or by hitting spacebar.
MAX only triggers pre-produced samples, no real-time processing is happening.
The MAX Patch runs both on Mac and Windows computers.

Sound of the flute (voice of the flutist) needs to blend well with the sound coming from the speakers.
Ideal position of the stereo speaker set would be behind the performer, so that no stage monitor is necessary.

A Furious $\text{♩} = \text{c. } 130$

Flute

1

(unpitched) continuous transition

2

pp *sffz p* *mf* *fp*

4

f

6

fp *f* *ff*

9

Jet Whistle 4

f *sffz* *f*

11

frull. *molto espress.*

B

fl.

13

5

mf *f*

t k s t k s t k s t k s t

vocalize gliss up

voc.

p *f*

⑥ Jet Whistle

16 *frull.*
 fl. *fp* *ff*
 t k s t k s t k s t k s

18 *sfz* *mf* *ff*
 fl. *tr*
 t k s t k s t k

20 *frull.*
 fl. *f* *sfz*
 voc. *p*
 gliss up
 t k s t k s t

22 *f* *sfz*
 fl. *frull.*
 voc. *gliss up*
 t k s t

24 *f* *fp* *f*
 fl. *frull.* *tr* *air intensity shape*
 5
 voc. *gliss up*

C

27 *sfz* *f* *subito p* *frull.* *fp*
 fl. *tr*
 t k s s t k
 voc. *p* *p* *p*

30 fl. *mf* t k s t k t k s t k s *ff* *f* **11**

32 fl. *fp* *f* *ff* { 1234 5 }
 voc. *ff* t k s t

34 fl. *f* *mf* t k s t **12**
 voc. *f* t k s t

36 fl. *sfz* *fp* *sfz* *frull.* **13**
 voc. *p* *p* *f* t k s t t k s t

39 fl. *fp* *ff* t k s t t k s t k s **14**
 voc. k s t

41 fl. *sfz* *f* *mf* **15**
 voc. tssss

D ♩ = c. 115

43 (16) *tr*

fl. *p*

{ 123 # } { 1234 } { 1234 }
5 345 ♯ 345 ♯

45 (17) (18) (19) (20)

fl. *f* > *f* > *f* > *f* > *mf* < *f*

gliss down *frull.*

47 *frull.*

fl. *fp* < *f*

50 (21) **E**

fl. *p* < *ff* > *mf* < *p*

{ 1234 } { 1234 } { 1234 }
345# 45 ♯ 23B5#

53 (22) (23) (24) (25)

fl. *f* > *f* > *f* > *f* > *fp* < *ff* > *frull.* *sfz*

56 *frull.*

fl. *frull.*

58 **F** (26)

fl. *mf* < *sfz*

$\{ 12\cancel{3}4 \}$ $\{ 12 \}$ $\{ 12345 \}$
 $\#$ $23B5\#$ $A 5$

1584 (27) 1145 (28) 144 (29)

60

fl. *f* *f* *fp* *sfz*

Releasing tension...

63

fl. *frull.* *fp* *f* *p* *pp*

molto rit.

whistle tone

voc. (Bass Hit in playback)

p

68

fl. *p* *frull.*

repeat improvisatory until sample almost fades out

voc. ssssss t k ssss t t t k s t k s tsssss

G Gentle noise

$\text{♩} = \text{c. } 105$

71

fl. *p* *mf* *fp*

change to unpitched air sound

electro kick KICK

75

fl. *f* *fp* *sfz*

electro kick

79 (change higher noise spectra)

fl. *p* *p* *fp*

electro kick

83

fl. *pp*

electro kick

H

32

86

fl. *f* *sfz fp* *f* *p* *mf*

electro kick

90

fl. *p* *pp* Whistle Tone 33

electro kick

94

fl. *sfz* *fp* *mf* (air color shape)

electro kick

I ♩ = c. 90

fl. 100 Subtle voice

34

p *f* *mf* *f*

Detailed description: Musical staff for flute, measures 100-106. Starts with a rest, then a series of sixteenth notes ascending from G4 to D5. Measure 104 has a circled measure number 34. Dynamics range from *p* to *f*. A slur covers measures 100-106.

fl. 107

36 37

mf *f* *mf* *f*

Detailed description: Musical staff for flute, measures 107-112. Continues with sixteenth notes, some descending. Measure 109 has a circled measure number 36, and measure 112 has a circled measure number 37. Dynamics range from *mf* to *f*. A slur covers measures 107-112.

fl. 113

38 Whistle Tone

mf *f* *pp*

Detailed description: Musical staff for flute, measures 113-120. Continues with sixteenth notes. Measure 115 has a circled measure number 38. Dynamics range from *mf* to *pp*. A slur covers measures 113-120. A dashed line labeled 'Whistle Tone' is above the staff from measure 115 to 120.

Free Tempo

fl. 120

gliss down

pp *mf* *p* *fp*

Detailed description: Musical staff for flute, measures 120-121. Measure 120 has a circled measure number 39. Dynamics range from *pp* to *fp*. A slur covers measures 120-121. A 'gliss down' instruction is above measure 121. A '5' is written below the first measure of the slur, and a '3' is written below the second measure.

fl. 122

39

fp

Detailed description: Musical staff for flute, measures 122-124. Measure 122 has a circled measure number 39. Dynamics range from *fp*. A slur covers measures 122-124. A '3' is written below the first measure of the slur.

fl. 125

40

Detailed description: Musical staff for flute, measures 125-126. Measure 125 has a circled measure number 40. The staff contains rests with 'x' marks above them, indicating a key click exercise. A slur covers measures 125-126.

fl. 127

41 lips stacc. bisb. (as soft as possible) *pp* (as soft as possible) *p*

Detailed description: Musical staff for flute, measures 127-131. Measure 127 has a circled measure number 41. Dynamics range from *pp* to *p*. A slur covers measures 127-131. A '3' is written below the first measure, and a '5' is written below the second measure. 'lips stacc.' and 'bisb.' are written above the staff.

fl. 132

42 key click

ppp *ppp* *p*

Detailed description: Musical staff for flute, measures 132-134. Measure 132 has a circled measure number 42. Dynamics range from *ppp* to *p*. A slur covers measures 132-134. A '5' is written below the first measure. 'bisb.' is written above the first measure, and 'key click' is written above the second measure.

J ♩ = c. 70
Distant voice

fl. 135 **(43)** *mf*

fl. 141

K ♩ = c. 70

fl. 146 *accel.* **(44)** *a tempo*

fl. 148 *accel.* *a tempo* wait for the playback to almost fade out

L ♩ = c. 60
Last call

fl. 152 **(45)** *p* *subito p*

fl. 155 **(46)** Like a whistle tone *ppp*

fl. 157 whistle tone *p*